

# Institutional capacity and civil society in the process of Roma Integration



9 October 2014 | Vienna

## Structure

1. Roma Integration in the framework of the EU Strategy for the Danube Region
2. Activities of Priority Area 10 „Institutional Capacity and cooperation“ of the EUSDR
3. About this meeting

# **Roma Integration in the framework of the EU Strategy for the Danube Region**

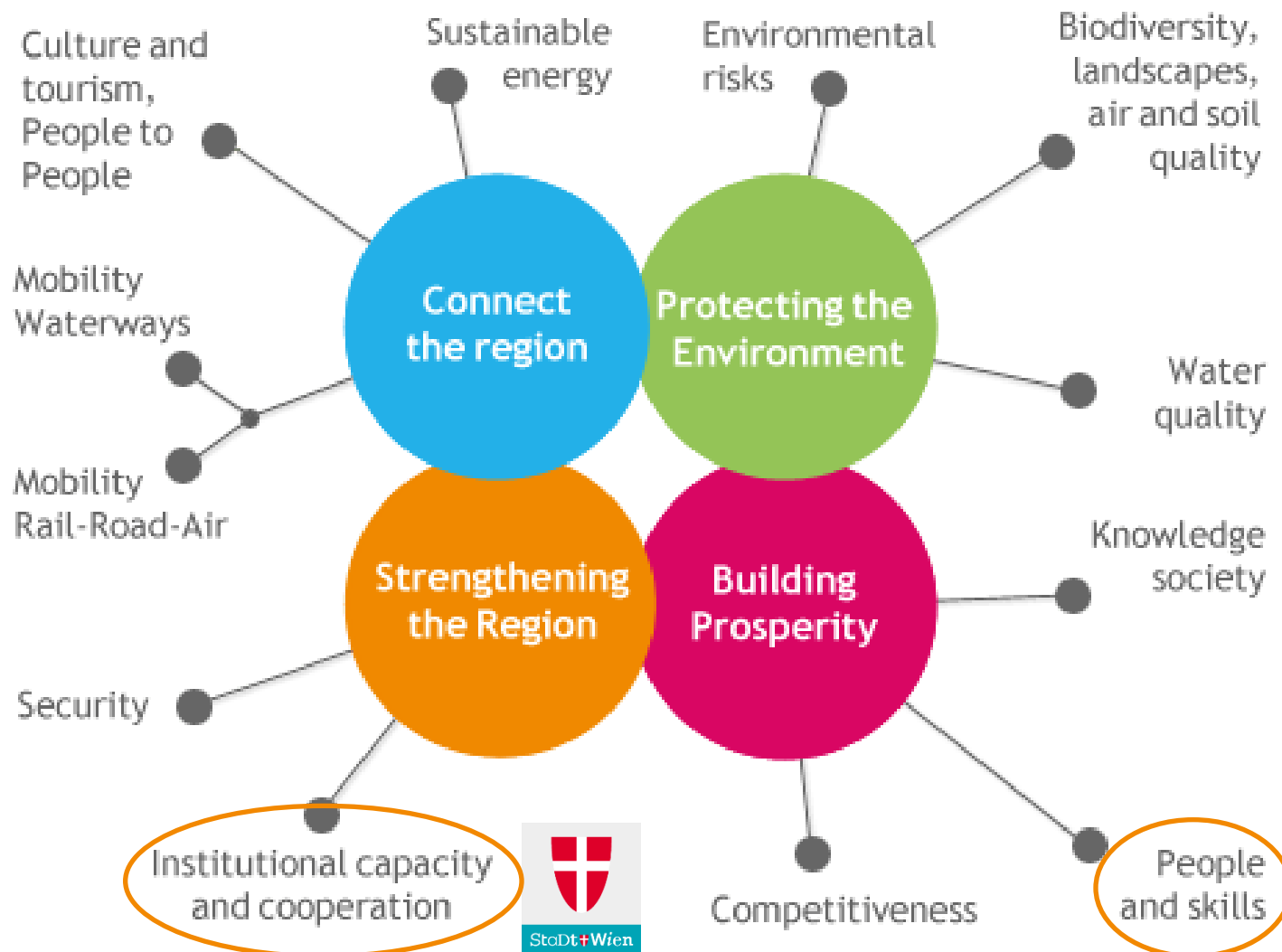


# Coverage of the EU Strategy for the Danube Region



## Disadvantaged communities in the Danube Region

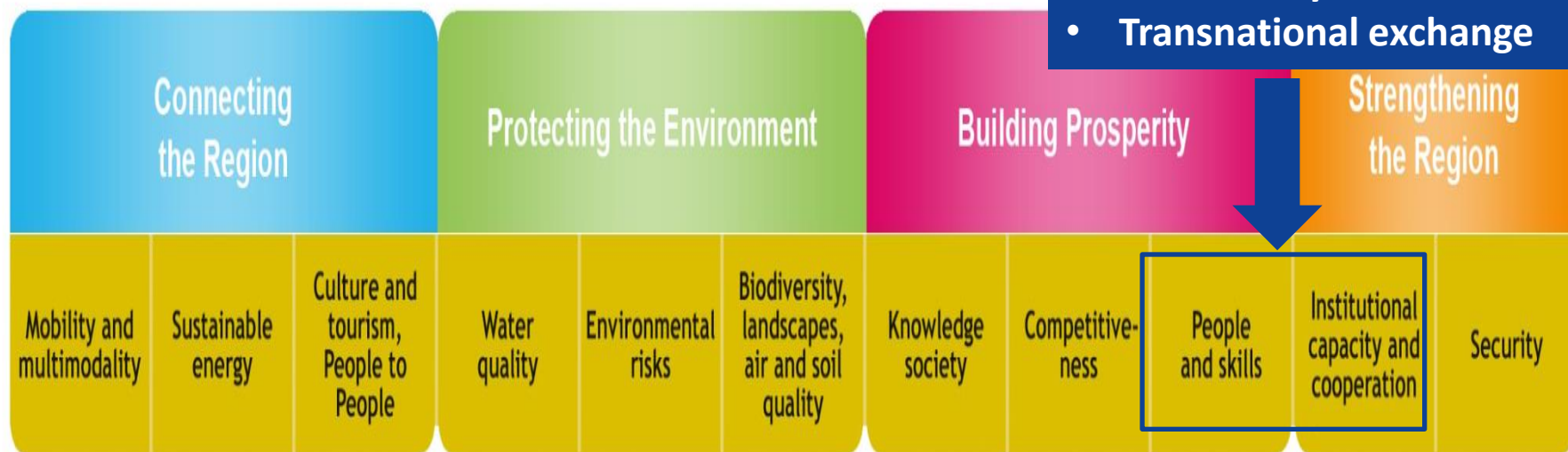
- Discrimination, social exclusion, spatial segregation
  - 80 % of the European Roma live in the Danube Region
  - Lack of resources and capacity in local administrations to address the issue in a holistic and transnational way
- 
- Need for the implementation of the integrated „place-based approach“, which puts a strong emphasis both on regionalisation and participation
  - Need for coordination of policies within the countries or between communities with similar challenges
  - Need for joint policy and project developments
  - Requirement for comparable data and support for local communities
  - Stronger involvement of the civil society on national EUSDR platforms as well as in the programming of operational programmes
  - Need to tackle brain-drain and bad effects of migration



## THE FOUR PILLARS

### Joint Action for Roma Inclusion:

- Education
- Employment
- Better Spending
- Civil society involvement
- Transnational exchange



**11 priority areas, coordinated by a priority area coordinator**

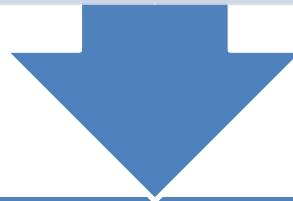
**Actions**

**Projects**

## Priority Area 9 „People & Skills“

Fighting poverty and social exclusion of marginalised communities in the Danube Region

Implementing the actions undertaken in the Roma Decade



## Priority Area 10 „Institutional Capacity“

Review bottlenecks relating to the low absorption rate of EU funds

Different actions linked to civil society and citizenship, e.g. trust in political authorities and institutional capacity



# **Priority Area 10 „Institutional Capacity and Cooperation“ Platforms and Pilot Projects**

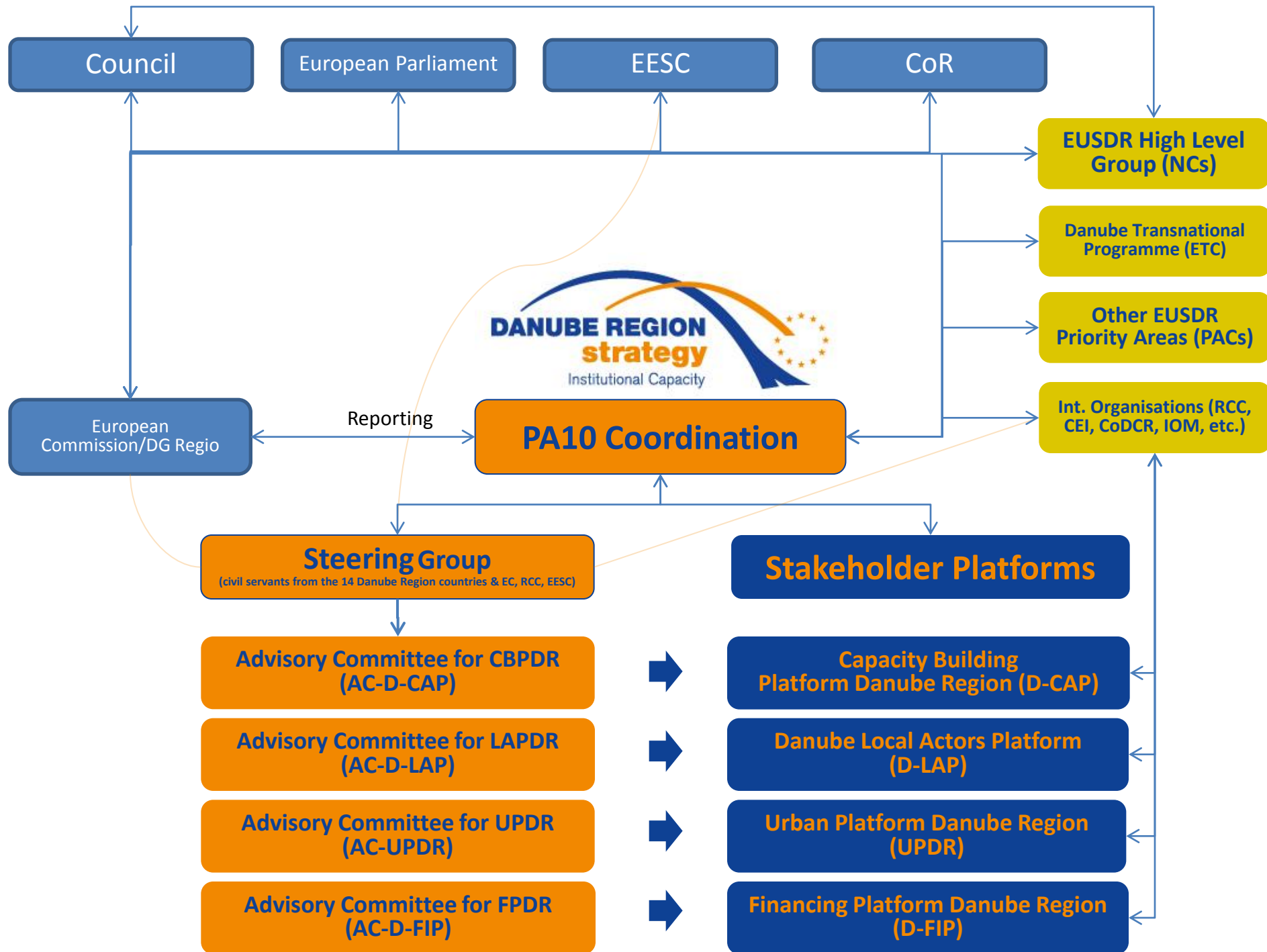
## **4 Stakeholder Platforms**

**Capacity Building Platform Danube Region**

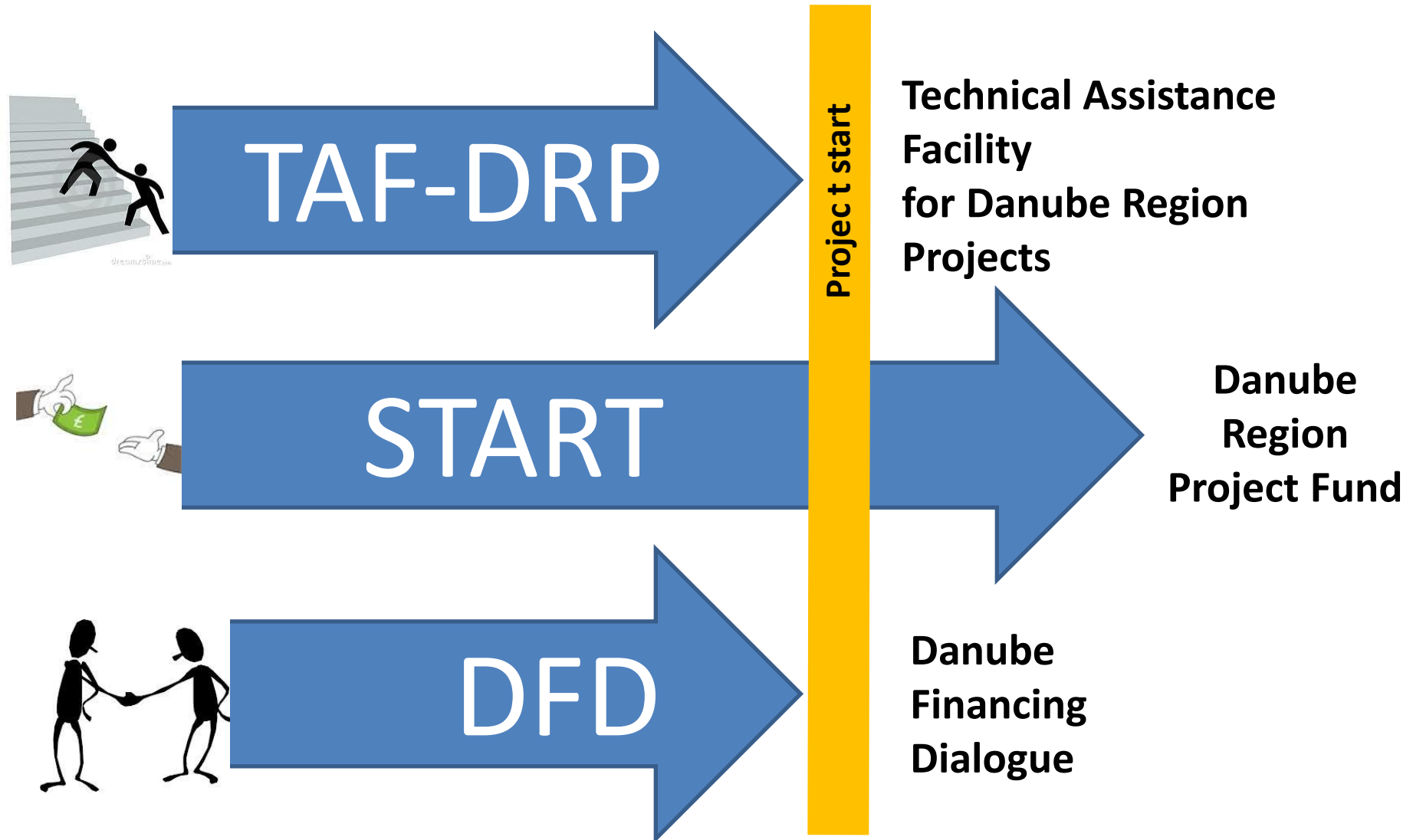
**Danube Local Actors Platform**

**Urban Platform Danube Region**

**Financing Platform Danube Region**



# Specific support for project development provided by Priority Area 10 of the EUSDR



# About this meeting



### EU2020

- **Target 1 Employment** 75% of the 20-64 year-olds to be employed
- **Target 4 Education** Reducing school drop-out rates below 10% / at least 40% of 30-34-year-olds completing third level education
- **Target 5 Poverty / social exclusion** at least 20 million fewer people in or at risk of poverty and social exclusion

### SEE2020

- Pillar on Inclusive Growth

### ROMA

- Housing
- Education
- Employment
- Health

## A few general remarks/guiding principles

### *Roma Integration is...*

- about European Integration and vice versa
- about EU enlargement and vice versa
- a transnational and a macro-regional issue
- a matter of both territorial and social cohesion
- a cross-sectoral issue
- an investment

**Thursday, 9 October 2014 | 14.00-18.00**

**Moderation: Elise Lindner, EuroVienna**

<b>14.00-14.15</b>	Welcome & introduction Susanne Pfanner, Austrian National Contact Point for Roma Integration
<b>14.15-14.30</b>	The EUSDR and its contribution towards Roma integration Roland Hanak, Priority Area Coordinator 9 “People and Skills” of the EUSDR
<b>14.30-14.45</b>	Institutional capacity and civil society in the process of Roma Integration Jörg Mirtl, Priority Area 10 “Institutional Capacity” of the EUSDR
<b>14.45-15.15</b>	Overview on Roma integration Strategies in the countries of the Danube Region Ilona Negro, European Commission, DG Justice
<b>15.15-15.45</b>	Overview on European funding for Roma integration, ESF programming Annette Bjornsson, European Commission, DG Employment
<b>15.45-16.15</b>	Coffee break
<b>16.15-16.45</b>	ERDF support for Roma inclusion in the 2014-2020 period Andor Ürmös, European Commission, DG Regio
<b>16.45-17.15</b>	Evidence-based policy making & local engagement for Roma inclusion Sheena Keller, Fundamental Rights Agency
<b>17.15-17.45</b>	Presentation of the transnational programmes of the ERDF “Danube TRANSNATIONAL” and “Central Europe” Christiane Breznik, City of Vienna

## Friday, 10 October 2014 | 09.00-14.00

Moderation: Elise Lindner, EuroVienna

09.00-09.30	Roma Integration in non-EU member States in the Danube Region Žarko Šunderić, Social Inclusion and Poverty Reduction Unit, Government of Serbia		
09.30-10.00	Operational challenges in the effective use of EU instruments Nadir Redzepi, Open Society Foundations		
10.00-10.30	Coffee break		
Discussion Session: Challenges and opportunities (90 minutes)			
10.30-12.00	European Social Fund	European Regional Development Fund	IPA/ENI
12.00-12.30	Presentation of URBACT project Roma-Net Attila Molnár, municipality of Budapest		
12.30-13.00	Hope for change or costly failure? Experiences of an EESC evaluation project on the implementation of the Roma integration strategies in the EU Ákos Topolánszky, European Economic and Social Committee		
13.00-13.15	Conclusions Jörg Mirtl, Priority Area 10 “Institutional Capacity” of the EUSDR Roland Hanak, Priority Area Coordinator 9 “People and Skills” of the EUSDR Susanne Pfanner, Austrian National Contact Point for Roma Integration		
13.15-14.00	Departure and snacks		

---

## Priority Area 10

### Institutional Capacity and Cooperation

Jörg Mirtl

**PA10 Project Manager - EUSDR**

Kirchberggasse 33-35 / 9

A - 1070 Wien

Tel: +43 (0) 1 89 08 088 2205

Mobile: +43 664 883 568 61

[joerg.mirtl@pa10-danube.eu](mailto:joerg.mirtl@pa10-danube.eu)



[www.danube-capacitycooperation.eu](http://www.danube-capacitycooperation.eu)

With the financial support of the European Union

